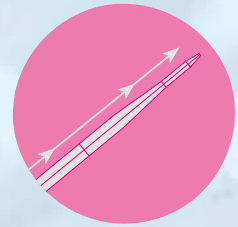


Device

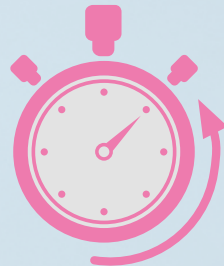
luminor 14

TransferTech technology provides Luminor14 with excellent deliverability to treat the most tortuous areas. Oceanus 14 balloon platform also features:



Balanced transition

Segmented design optimized for excellent **pushability** and **trackability**.



Short deflation rates

Thanks to the outstanding design of the catheter.



Tungsten-based radiopaque Marker

Greater **flexibility** with the same **visibility**.

luminor 35

Oceanus 35 balloon platform also features:



Short deflation rates

Thanks to the outstanding design of the catheter.



Double lumen tube with optimized design

Excellent **pushability** and **trackability** maximizing **deflation rates**.



Non-traumatic conical tip

Smooth finish for optimal **crossing** of severe injuries.

Main Features luminor 14

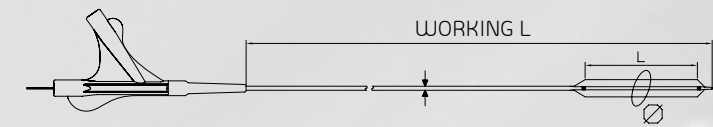
- Coaxial catheter
- Working catheter length: 100 and 150 cm
- Guide wire compatibility: 0.014"
- Nominal pressure: 7 atm
- Rated Burst Pressure (RBP): 16 atm
- Introducer: 4F

References Working Catheter Length 100 cm

Ballon diameter (mm)	Ballon length (mm)					
	40	60	80	120	150	200 ^{HL}
1.5	BP DPC14 100 150 040	BP DPC14 100 150 060	BP DPC14 100 150 080			
2.0	BP DPC14 100 200 040	BP DPC14 100 200 060	BP DPC14 100 200 080	BP DPC14 100 200 120	BP DPC14 100 200 150	BP DPC14 100 200 200
2.5	BP DPC14 100 250 040	BP DPC14 100 250 060	BP DPC14 100 250 080	BP DPC14 100 250 120	BP DPC14 100 250 150	BP DPC14 100 250 200
3.0	BP DPC14 100 300 040	BP DPC14 100 300 060	BP DPC14 100 300 080	BP DPC14 100 300 120	BP DPC14 100 300 150	BP DPC14 100 300 200
3.5	BP DPC14 100 350 040	BP DPC14 100 350 060	BP DPC14 100 350 080	BP DPC14 100 350 120	BP DPC14 100 350 150	BP DPC14 100 350 200
4.0	BP DPC14 100 400 040	BP DPC14 100 400 060	BP DPC14 100 400 080	BP DPC14 100 400 120		

References Working Catheter Length 150 cm

Ballon diameter (mm)	Ballon length (mm)					
	40	60	80	120	150	200
1.5	BP DPC14 150 150 040	BP DPC14 150 150 060	BP DPC14 150 150 080			
2.0	BP DPC14 150 200 040	BP DPC14 150 200 060	BP DPC14 150 200 080	BP DPC14 150 200 120	BP DPC14 150 200 150	BP DPC14 150 200 200
2.5	BP DPC14 150 250 040	BP DPC14 150 250 060	BP DPC14 150 250 080	BP DPC14 150 250 120	BP DPC14 150 250 150	BP DPC14 150 250 200
3.0	BP DPC14 150 300 040	BP DPC14 150 300 060	BP DPC14 150 300 080	BP DPC14 150 300 120	BP DPC14 150 300 150	BP DPC14 150 300 200
3.5	BP DPC14 150 350 040	BP DPC14 150 350 060	BP DPC14 150 350 080	BP DPC14 150 350 120	BP DPC14 150 350 150	BP DPC14 150 350 200
4.0	BP DPC14 150 400 040	BP DPC14 150 400 060	BP DPC14 150 400 080	BP DPC14 150 400 120		



Main Features luminor 35

- Coaxial catheter
- Working catheter length: 80 and 140 cm
- 0.035" guide compatibility
- Tip profile: 0.036"
- Crossing profile between 0.061" and 0.083"

References Working Catheter Length 80 cm

Ballon diameter (mm)	Ballon length (mm)					
	20	40	60	80	120	150
5.0	BP DPC35 080 500 020	BP DPC35 080 500 040	BP DPC35 080 500 060	BP DPC35 080 500 080	BP DPC35 080 500 120	BP DPC35 080 500 150
6.0	BP DPC35 080 600 020	BP DPC35 080 600 040	BP DPC35 080 600 060	BP DPC35 080 600 080	BP DPC35 080 600 120	BP DPC35 080 600 150
7.0	BP DPC35 080 700 020	BP DPC35 080 700 040	BP DPC35 080 700 060	BP DPC35 080 700 080	BP DPC35 080 700 120	

References Working Catheter Length 140 cm

Ballon diameter (mm)	Ballon length (mm)					
	20	40	60	80	120	150
5.0	BP DPC35 140 500 020	BP DPC35 140 500 040	BP DPC35 140 500 060	BP DPC35 140 500 080	BP DPC35 140 500 120	BP DPC35 140 500 150
6.0	BP DPC35 140 600 020	BP DPC35 140 600 040	BP DPC35 140 600 060	BP DPC35 140 600 080	BP DPC35 140 600 120	BP DPC35 140 600 150
7.0	BP DPC35 140 700 020	BP DPC35 140 700 040	BP DPC35 140 700 060	BP DPC35 140 700 080	BP DPC35 140 700 120	

Vascular
therapies for living

Distributed by:



Product with CE mark



Manufactured by:
LVD Biotech, S.L.
www.ivascular.es
info@ivascular.es

MP 51091-E01.00

Vascular
therapies for living

luminor
14/35

Paclitaxel-eluting peripheral dilatation balloon catheters

THE PERIPHERAL SOLUTION

Effectiveness based on proprietary technology TransferTech

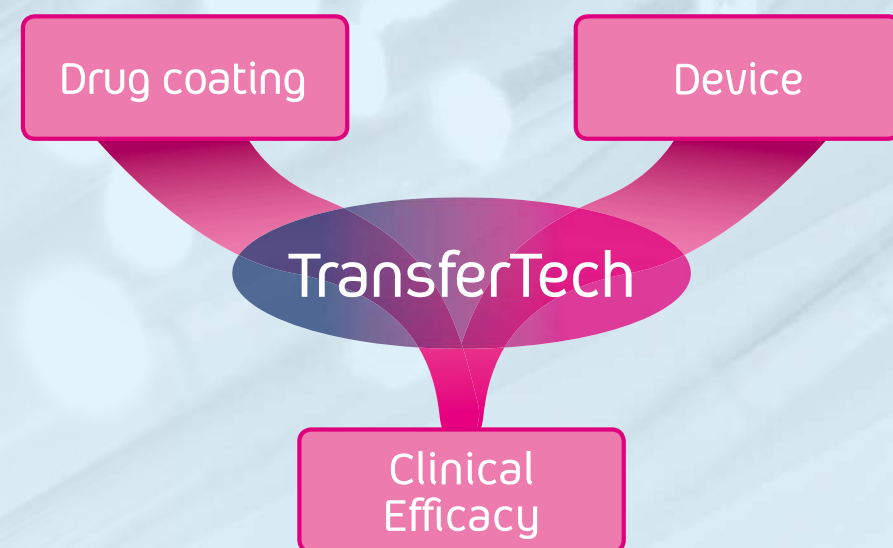
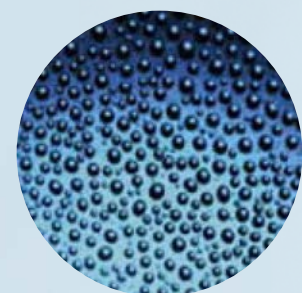
Based on the successful balloon platform oceanus 14 and oceanus 35, luminor 14 and luminor 35 feature unprecedented trackability, drug elution rate and effectiveness thanks to the new TransferTech technology from iVascular.

TransferTech

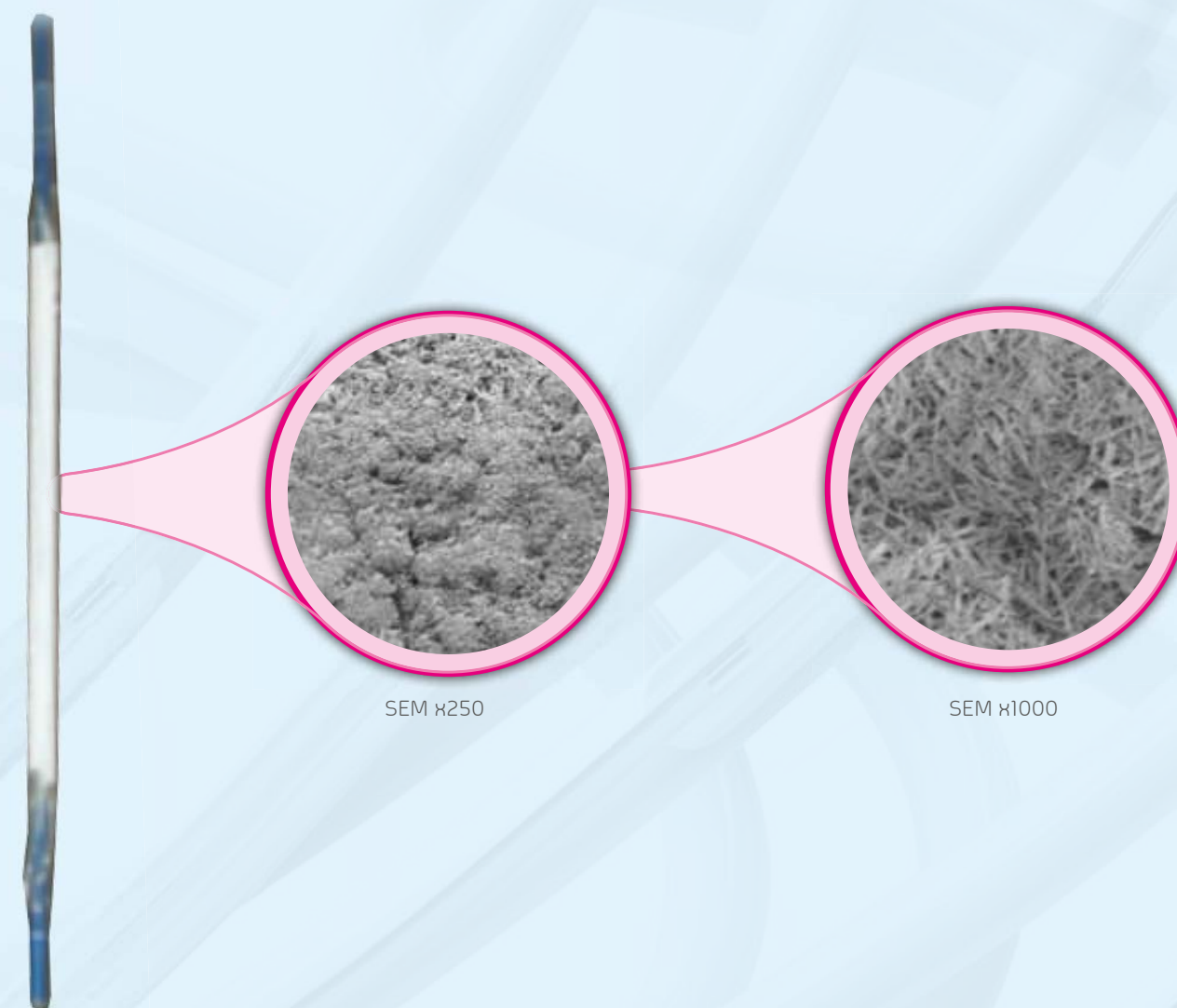
Nanotechnology drop dosage procedure that yields a multilayer thin coating.

Homogeneous and precise paclitaxel concentration of 3µg/mm².

TransferTech has been engineered to improve clinical efficacy by optimizing coating properties and device functionalities.



Drug coating



SEM x250

SEM x1000

Improved mechanical properties provided by a multilayer coating that allows better adhesion to the balloon:

- Minimizes consequences of handling.
- Assures stability during trackability and prevents the release of particles.

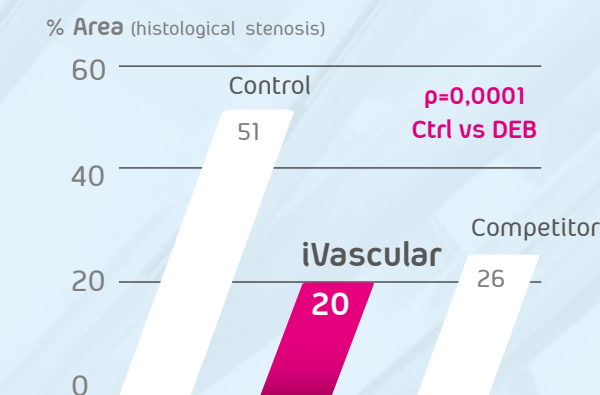
Paclitaxel deposition in microcrystalline structure:

- Excellent transfer of drug to the vessel wall.
- Fast drug absorption: 30 - 60 s.
- High drug retention time in the arterial wall.

Homogeneous and precise paclitaxel distribution for an effective treatment of the whole injury.

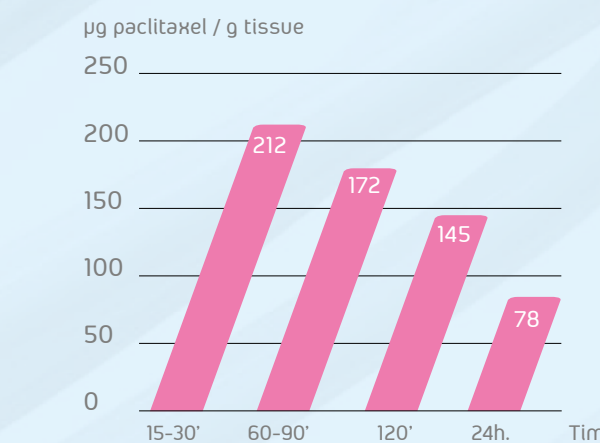
Preclinical Efficacy

Luminor 14 yields 28-day restenosis that is statistically lower than the control and goes up to 23% less than competitors.



Preclinical study N = 17. Angiographical and histological follow-up 28 days. Tests made by iVascular. Data stored in file at iVascular.

Prompt and sustained availability of paclitaxel in the arterial wall.



Pharmacokinetic study. Tests made by iVascular. Data stored in file at iVascular.

Rapid release of paclitaxel with long-term efficacy.